

Outbreaks of Illness: 2012 End of Year Report

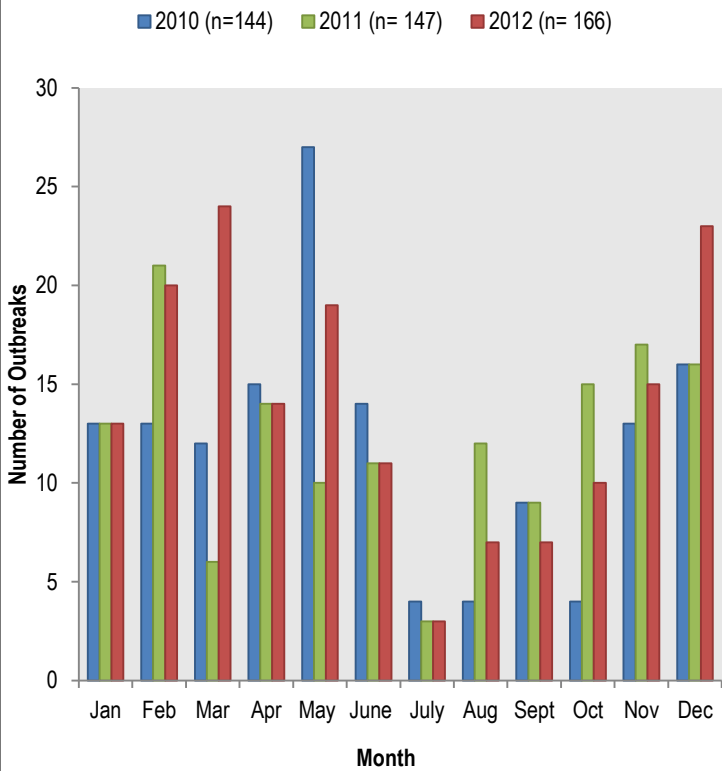


Outbreaks occur when there is an increase in the number of disease cases, above what would normally be expected within a specific place or group of people and within a certain period of time. In 2012, 176 outbreaks were investigated by Maricopa County Department of Public Health (MCDPH). Of those 176 outbreaks, 10 were ruled out. This report describes trends and provides summary statistics for outbreaks occurring in Maricopa County in 2012. For more information, please contact the Office of Epidemiology at MCDPH (602) 372-2605.

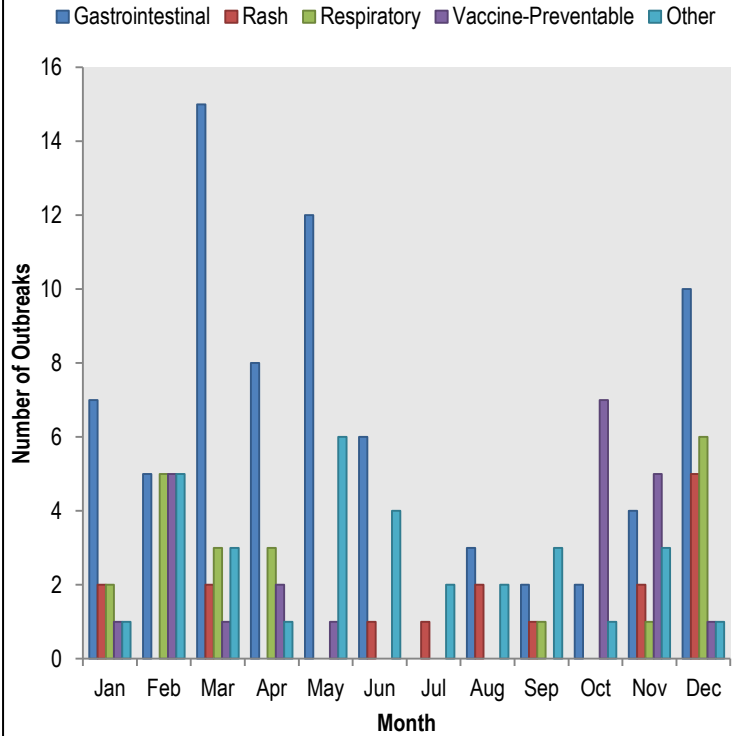
Characteristics of Reported Outbreaks: Maricopa County, 2012							
Year Total*	Number of Persons Ill per Outbreak†						
166	<table style="margin-left: auto; margin-right: auto;"> <tr> <td style="text-align: center;">2</td> <td>=Minimum</td> </tr> <tr> <td style="text-align: center;">84</td> <td>=Maximum</td> </tr> <tr> <td style="text-align: center;">7</td> <td>=Median</td> </tr> </table>	2	=Minimum	84	=Maximum	7	=Median
2	=Minimum						
84	=Maximum						
7	=Median						
<small>*10 reported outbreaks were later ruled-out and not included in this summary †For cases whom information was available</small>							

2012 Outbreaks by Etiology			
Gastrointestinal	74 (45%)	Respiratory	21 (12%)
Campylobacter	1 (1%)	Influenza	4 (2%)
Clostridium perfringens	1 (1%)	Influenza-like Illness	1 (1%)
Norovirus	43 (26%)	Mycoplasma pneumonia	2 (1%)
Gastrointestinal- Unknown Type	29 (17%)	Respiratory Syncytial Virus (RSV)	4 (2%)
		Strep Throat (Type A, non-invasive)	5 (3%)
Other	32 (19%)	Respiratory- Unknown Type	5 (3%)
Conjunctivitis	11 (7%)		
Hand, Foot, and Mouth Disease	14 (8%)	Vaccine-Preventable	23 (14%)
Head Lice	6 (3%)	Mumps	1 (1%)
Lye Irritation	1 (1%)	Pertussis	12 (7%)
		Varicella	10 (6%)
Rash	16 (10%)		
Impetigo	1 (1%)		
Ringworm	1 (1%)		
Scabies	10 (6%)		
Staphylococcus Skin Infection	3 (2%)		
Rash- Unknown Type	1 (1%)		

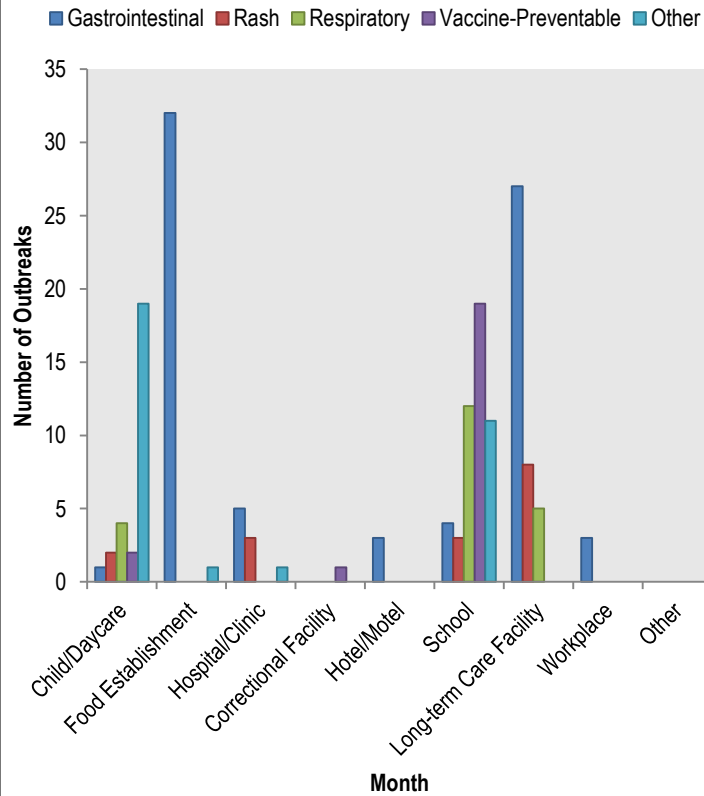
Number of Outbreaks Reported by Month 2010-2012



Number of Outbreaks Reported by Type and Month 2012 (n=166)



Number of Outbreaks by Type and Facility (n=166)



Percentage of Gastrointestinal Outbreaks by Etiology 2012

