

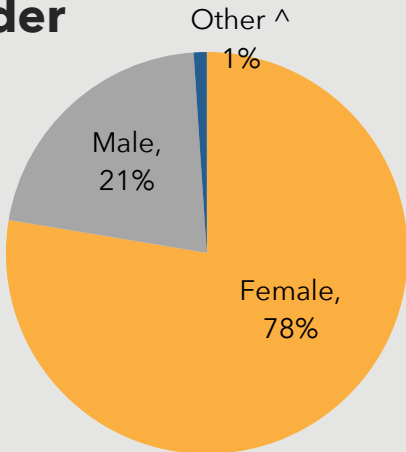
CITY OF PEORIA

Responses to the 2019 Community Health Assessment Survey from the residents of Peoria

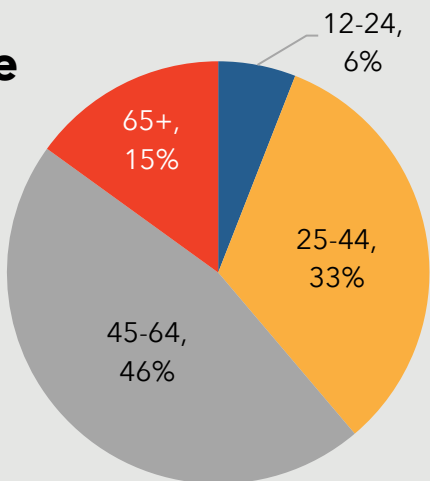
Who took the survey in Peoria?



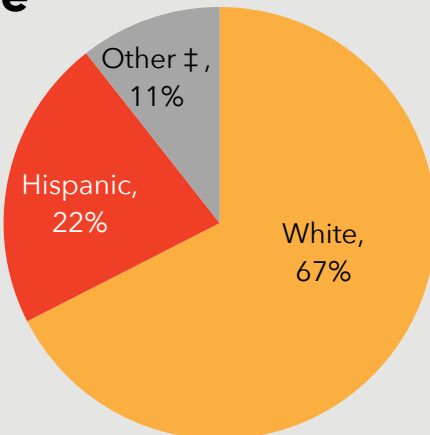
Gender



Age



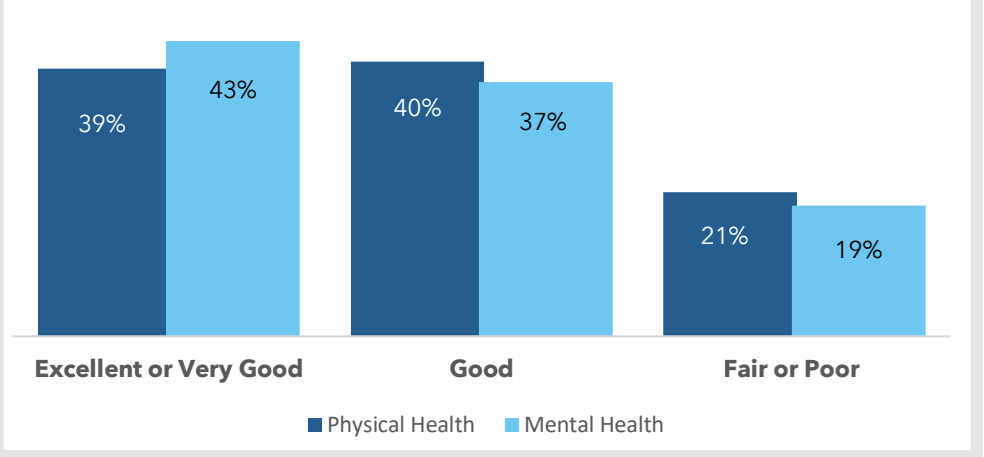
Race



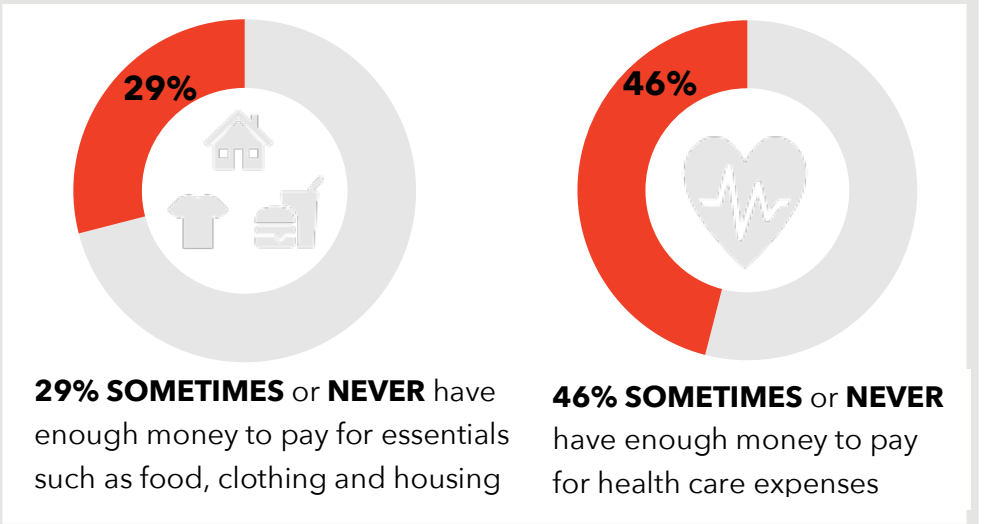
13%

reported a household income of **less than \$20,000.**

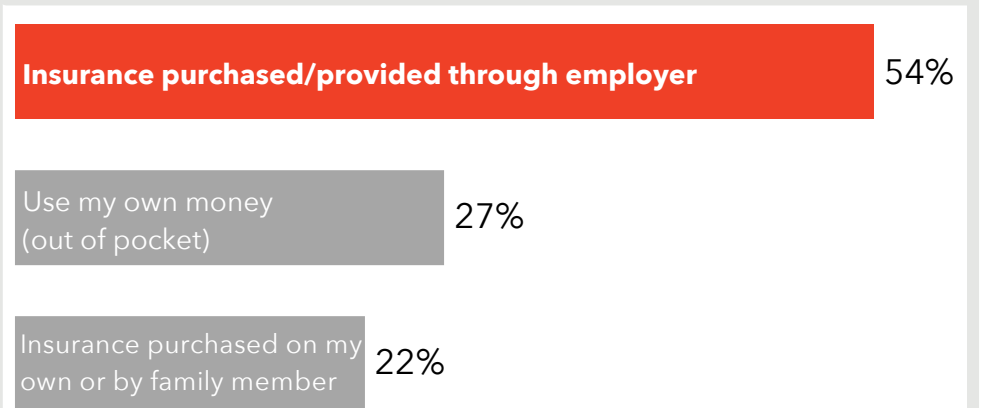
How do Peoria respondents rate their Physical and Mental Health?



Do Peoria respondents struggle each month to pay for medical care and/or necessities?



How do Peoria respondents pay for their health care?



286 surveys collected.

^ The 'Other' category includes 'Transgender' responses for gender.

‡ Due to low response rates, the 'Other' category includes 'Asian', 'Native Hawaiian', 'Alaska Native', 'American Indian/Native American', 'Black or African American', 'Multi-racial', and 'Other' responses or race/ethnicity.

The City of Peoria Survey Respondents

TOP 3 COMMUNITY STRENGTHS



Access to parks and recreation sites	----- 65%
Access to public libraries and community centers	----- 54%
Clean environments and streets	----- 53%

TOP 3 COMMUNITY ISSUES



Distracted driving	----- 58%
Bullying/peer pressure	----- 24%
Homelessness	----- 23%

TOP 3 BARRIERS TO HEALTHCARE



Underinsured	----- 37%
Difficulty finding the right provider for my care	----- 33%
Inconvenient office hours	----- 28%

TOP 3 HEALTH CONDITIONS



Alcohol/substance abuse	----- 48%
Overweight/obesity	----- 46%
Mental health issues	----- 40%

Want More?

- Find out how your city compares to other cities in Maricopa County.
- Submit a Data Request to obtain regional survey results.
- Join Synapse to partner with local organizations.

Contact:

[Eileen Aguilar](#)

(602) 859-4763

Eileen.Aguilar@maricopa.gov

[Data Request:](#)

<https://www.maricopa.gov/data-request>