

85345, 85304, 85307, 85305, 85302

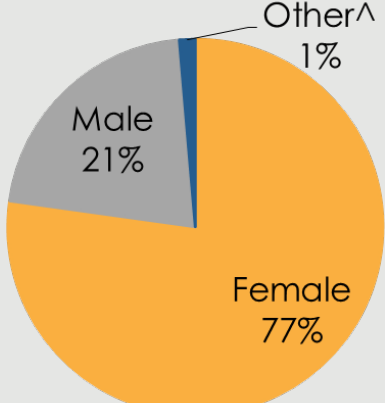


# ZONE 26

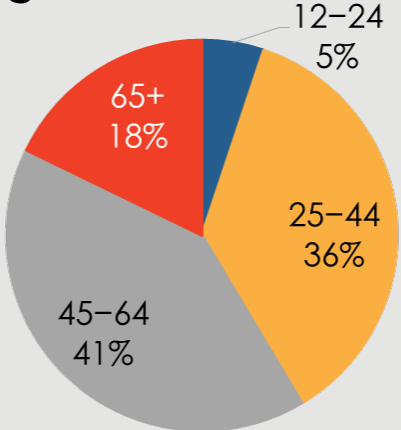
Responses to the 2019 Community Health Assessment Survey from the residents of Zone 26.

## Who took the survey in Zone 26?

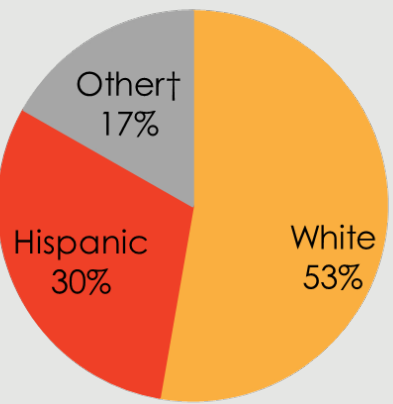
### Gender



### Age



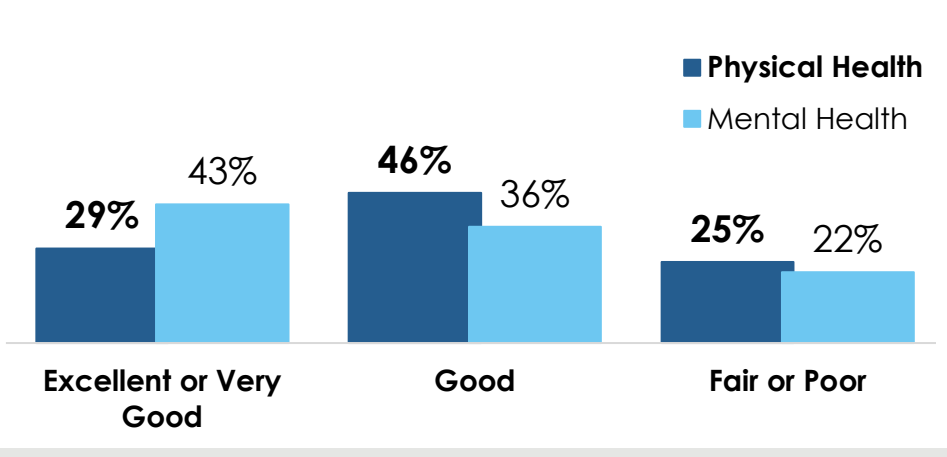
### Race



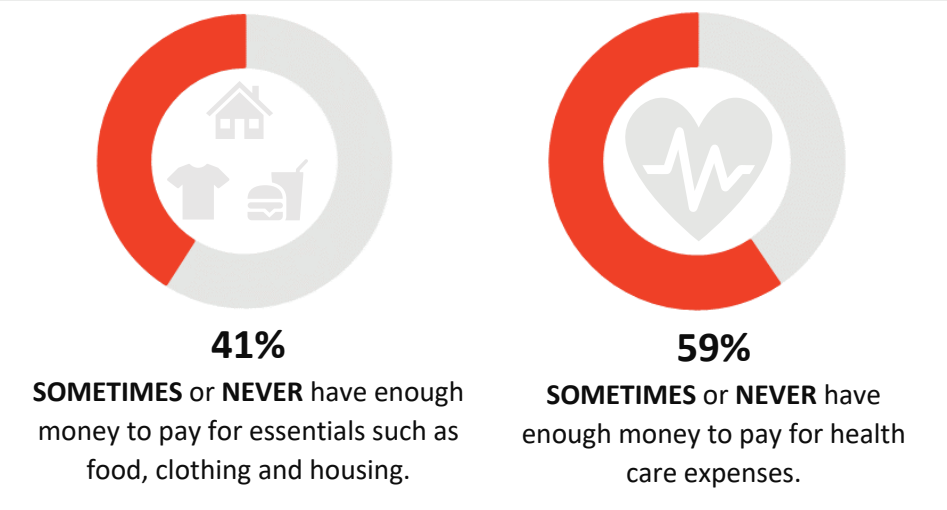
**22%**

reported a household income of **less than \$20,000.**

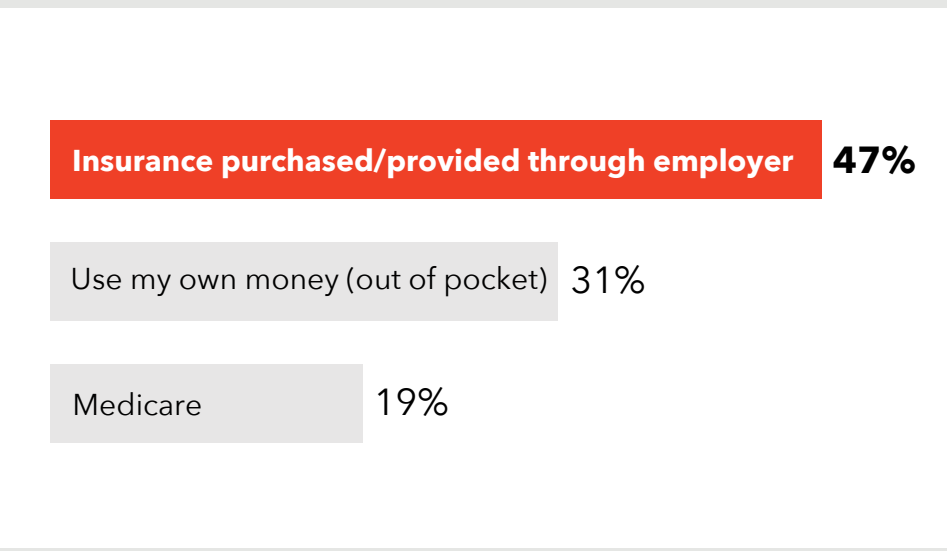
## How do respondents in Zone 26 rate their Physical and Mental Health?



## Do respondents in Zone 26 struggle each month to pay for medical care and/or necessities?



## How do residents in Zone 26 pay for health care?



294 surveys collected.  
 Some demographic data may total over 100% due to rounding.  
<sup>^</sup> The 'Other' category includes 'Transgender' responses for gender.  
<sup>†</sup> Due to low response rates, the 'Other' category includes 'Asian', 'American Indian/Native American', 'Black or African American', 'Native Hawaiian or Other Pacific Islander', 'Multi-racial', and 'Other' responses or race/ethnicity.



## Zone 26 Survey Respondents

### TOP 3 COMMUNITY STRENGTHS



|  |       |     |
|--|-------|-----|
| Access to parks and recreation sites             | ----- | 56% |
| Access to public libraries and community centers | ----- | 55% |
| Access to public transportation                  | ----- | 37% |

### TOP 3 COMMUNITY ISSUES



|                    |       |     |
|--------------------|-------|-----|
| Distracted driving | ----- | 48% |
| Homelessness       | ----- | 31% |
| Illegal drug use   | ----- | 22% |

### TOP 3 BARRIERS TO HEALTHCARE



|   |       |     |
|---|-------|-----|
| Underinsured                                      | ----- | 41% |
| Difficulty finding the right provider for my care | ----- | 31% |
| Inconvenient office hours                         | ----- | 27% |

### TOP 3 HEALTH CONDITIONS



|                                    |       |     |
|------------------------------------|-------|-----|
| Alcohol or substance abuse         | ----- | 51% |
| Overweight or obesity              | ----- | 50% |
| High blood pressure or cholesterol | ----- | 37% |

### Want More?

- Find out how your city compares to other cities in Maricopa County.
- Submit a Data Request to obtain regional survey results.
- Join Synapse to partner with local organizations.

### Contact:

[Eileen Aguilar](#)

(602) 859-4763

[Eileen.Aguilar@maricopa.gov](mailto:Eileen.Aguilar@maricopa.gov)

### Data Request:

<https://www.maricopa.gov/data-request>