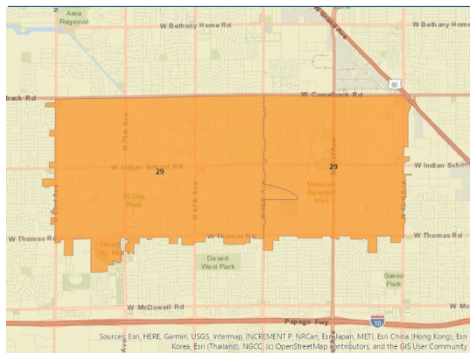


85031, 85033



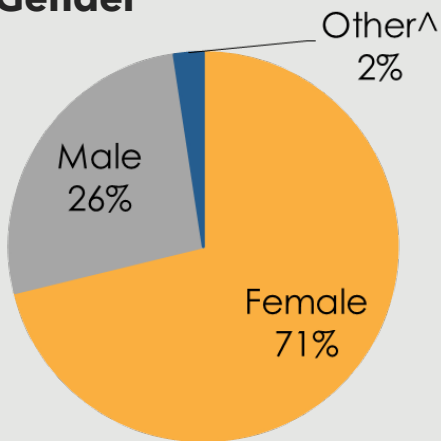
ZONE 29

Responses to the 2019 Community Health Assessment Survey from the residents of Zone 29.

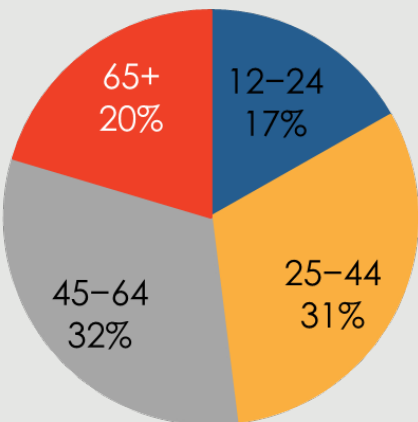


Who took the survey in Zone 29?

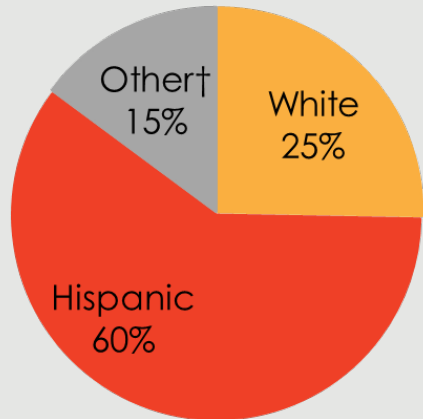
Gender



Age



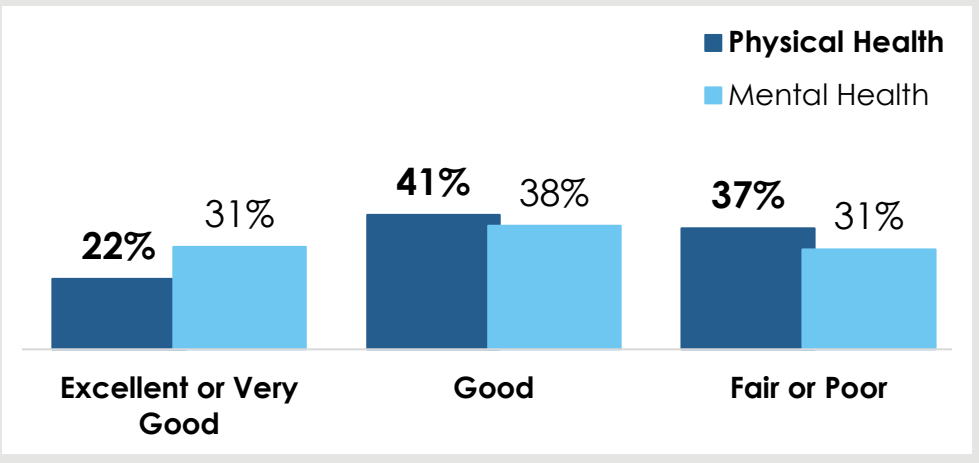
Race



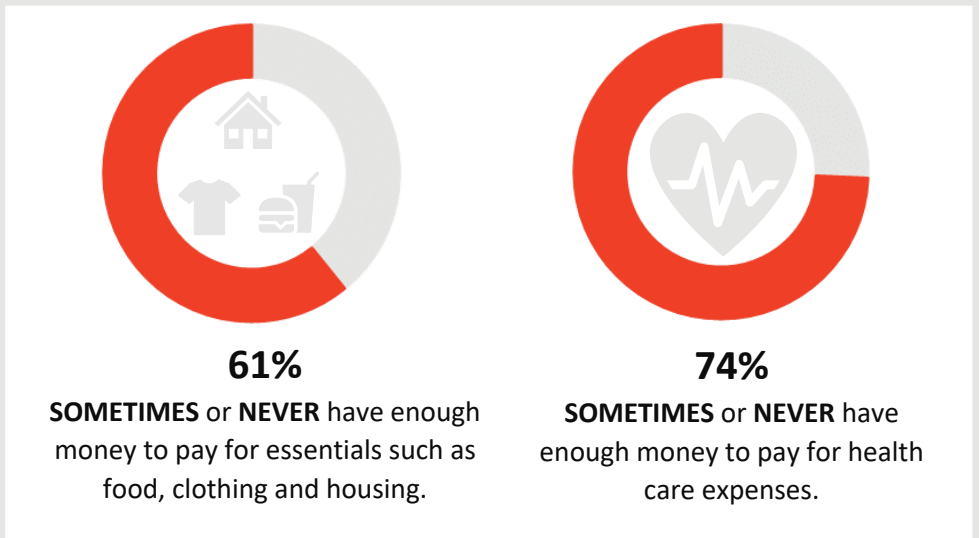
40%

reported a household income of **less than \$20,000.**

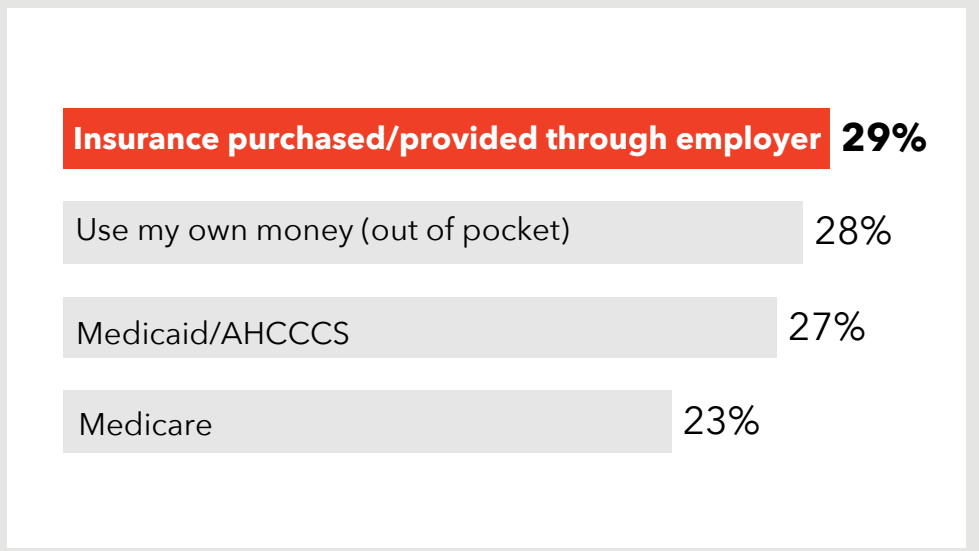
How do respondents in Zone 29 rate their Physical and Mental Health?



Do respondents in Zone 29 struggle each month to pay for medical care and/or necessities?



How do residents in Zone 29 pay for health care?



251 surveys collected.

Some demographic data may total over 100% due to rounding.

[^] The 'Other' category includes 'Transgender' responses for gender.

[†] Due to low response rates, the 'Other' category includes 'Asian', 'American Indian/Native American', 'Black or African American', 'Multi-racial', and 'Other' responses or race/ethnicity.

TOP 3
COMMUNITY
STRENGTHS



Access to parks and recreation sites	-----	48%
Access to public libraries and community centers	-----	45%
Access to public transportation	-----	40%

TOP 3
COMMUNITY
ISSUES



Distracted driving	-----	37%
Homelessness	-----	31%
Illegal drug use	-----	31%

TOP 3
BARRIERS TO
HEALTHCARE



Uninsured	-----	36%
Underinsured	-----	28%
Difficulty finding the right provider for my care	-----	24%

TOP 3
HEALTH
CONDITIONS



Alcohol or substance abuse	-----	59%
Diabetes	-----	37%
High blood pressure or cholesterol	-----	32%

Want More?

- Find out how your city compares to other cities in Maricopa County.
- Submit a Data Request to obtain regional survey results.
- Join Synapse to partner with local organizations.

Contact:

[Eileen Aguilar](#)

(602) 859-4763

Eileen.Aguilar@maricopa.gov

Data Request:

<https://www.maricopa.gov/data-request>